



MANDARINSTONE

MANDARINSTONE

Since our last brochure, we have been in continual search of fresh and exciting products which we are now delighted to present in our new portfolio.

With a noticeably extended range, new finishes, sizes and formats, we are proud to offer a more diverse and inspiring collection. From cobbles and flags, to brushed limestones and split-face mosaics, we have undoubtedly broadened your design options, whether classic or contemporary.

Mandarin's stock levels remain high, delivery service rapid and prices competitive. Furthermore, our expert knowledge on fixing and finishing products, together with our keen eye for design will make choosing your floor or wall covering an enjoyable experience.

As always, do contact us if you would like to discuss your requirements or visit any of our showrooms.

Special thanks to all our clients involved in the photography for this brochure.

Colours are reproduced as accurately as the current printing process allows and are intended as a guide only. Geological variations will occur throughout our range of natural materials; this is beyond our control.

This brochure is the copyright of Mandarin 2006. No whole or part may be reproduced without written permission.

Design: Amanda Shufflebotham Photography: Simon Regan Print: EPC

CONTENTS

PRODUCT GUIDE	04	RIVENSTONE	57
GLOSSARY	05	● SLATE	58
GENERAL INFORMATION	06	● SANDSTONE	63
HONEDSTONE	07	● SCHIST	64
● LIMESTONE	8	TERRACOTTA	65
● TRAVERTINE	18	MOSAIC	69
● SLATE	24	MOULDINGS	85
● BASALT	25	BATHWARE	87
● MARBLE	26	COBBLES & FLAGS	91
POLISHEDSTONE	27	FABRICATION	99
● LIMESTONE	28	STONE LAYOUTS	101
● TRAVERTINE	30	TECHNICAL INFORMATION	109
● MARBLE	31	ANCILLARY PRODUCTS	114
● GRANITE	34	STONE SELECTOR	116
ANTIQUESTONE	35		
● LIMESTONE	36		
● TRAVERTINE	46		
● MARBLE	52		





MANDARINSTONE

PRODUCT GUIDE

LIMESTONE

A sedimentary rock geologically formed by the consolidation of seashells. This calcareous stone is usually light in colour with delicate shell and mineral mottling. Darker varieties are less prolific.

SLATE

A fine-grained metamorphic rock that characteristically splits into broad sheets. A durable stone, which offers a diverse range of colours and textures.

GRANITE

A hard igneous rock where colours can be intense and often varied.

TRAVERTINE

A crystalline form of calcium carbonate resulting from spring or river deposits, first used by the Romans some 2000 years ago. It is a hard durable stone characterised by surface pits and holes.

BASALT

A hard and dense, fine-grained volcanic rock which is usually grey in colour.

SANDSTONE

A coarse-grained sedimentary rock formed by compressed sand deposited by water or wind. It is commonly characterised by a granular surface.

MARBLE

A metamorphic rock historically used in ancient buildings by the Greeks and Romans. Marble encompasses a vast spectrum of colours from white to black, with mineral veining generally contrasting to the base stone colour.

SCHIST

A dense metamorphic crystalline rock that offers considerable shade variation, ranging from light pearl grey to dark gold.

GLOSSARY OF STONE TERMS

ALEA - a finish which offers a gently softened edge to the tile and a very light surface texture

ANTIQUÉ - a term which encompasses various ageing/distressing methods which achieves a worn look to the stone. Please note that stones originate from different countries, antiquing methods will vary, and therefore ultimately the look of the stone will also vary.

BRUSHED - a method of 'ageing' stone with metal brushes. This results in some surface texture and a softly rounded edge.

COBBLE - a stone that has been hand finished or tumbled to create a worn look.

CROSS CUT - relates mainly to travertine where the blocks are cut horizontally to achieve the more commonly used finish.

FABRICATION - term used for bespoke vanity tops, stair treads, work surfaces etc.

FILLED - this term is related primarily to travertine. Travertine is characterised by surface pits and holes, these can be pre-filled at source by a stone or epoxy resin substance. Not every single pit/hole may be completely filled and therefore even a pre-filled stone may require some filling by cement grout during the fixing process.

FILLING - this is the terminology of any corrective fill that is commonly used in the stone industry in some limestone, travertine or marble. Some marbles may also be backed with a mesh which further strengthens the stone when heavily veined.

FLAG - usually a larger and thicker stone tile, various finishes are available.

FLAMED - a form of 'ageing' the stone where the surface is subject to intense heat, which achieves an unusual texture, which is also non-slip.

FREE LENGTHS - a laying format for tiles, where the width of the stone is static i.e. 400mm or 600mm and the length of the tiles vary, but are usually more than their width.

HONED - tiles are mechanically treated to achieve a smooth surface to the face of the stone.

NOMINAL - a small variation from stated sizes and thicknesses.

OPUS - a repeated pattern using different sized tiles that give a random effect. There are many differing Opus patterns depending on the type of stone and country of origin.

PILLOWED - a form of 'ageing' stone, where the tiles have a soft, pronounced 'pillowed' edge.

POLISHED - where the stone is mechanically worked to achieve a high reflective gloss to the surface of the tile.

RIVEN - a naturally cleft or riven face is simply achieved by splitting blocks of stone. This term usually relates to slate, schist or sandstone.

SLAB - a medium to large piece of stone, surface and thickness to requirements.

SPLIT-FACE - varying levels of chiselled stone.

TUMBLED - a form of 'ageing' stone when the stone has been 'tumbled' which gives a rounded edge to the tile and the surface is slightly textured.

UNCALIBRATED - when the thickness of the tile varies to a greater or lesser degree.

UNFILLED - this term is primarily related to travertine. Travertine is characterised by surface pits and holes. This then requires the surface of the stone to be filled with cement grout during the fixing process.

VEIN-CUT - this term relates to travertine or marble, where the blocks are cut to show their natural vertical striations.

WAXED - a form of 'ageing' the stone to give a sophisticated, brushed look.

GENERAL INFORMATION

PRODUCT AVAILABILITY

All materials featured in this brochure are normally stocked to a high level in our Monmouth, U.K. warehousing, not withstanding delays caused by ocean shipping or a short supply of raw materials, which is beyond our control.

We reserve the right to discontinue or change the specification of items as and when circumstances necessitate, without prior notice.

New stones, together with new finishing techniques are constantly being sourced and added to our range of stocked materials.

Other stones not held in our U.K. stock can normally be made available in 4-8 weeks.

SAMPLE SERVICE

Stone is a natural material with inherent variations of colour, tonal markings and surface textures. All samples are intended as a guide only, therefore, please inspect or view as many tiles as possible to give an overall appearance of the material chosen.

Small cut samples, a maximum of three per request, can be sent as a complimentary service. Please be aware of shade and texture variation before placing an order as samples are intended as a guide only.

Large stone tiles for sampling purposes can be purchased from stock and are then refundable if returned in a re-saleable condition.

PLACING YOUR ORDER

Prices are ex-warehouse Monmouth U.K. and are subject to VAT at the current rate.

A wastage factor should be taken into account for each project prior to ordering. This is normally 10% which should allow for cuts to walls and any minor tile imperfections. Additional tiles are often packed in order to help cover for wastage.

We operate a 'no returns policy' so please measure carefully before placing your order.

At the point of order, availability of the goods should be stock checked to help coincide with your delivery date requirements.

Our quotes and invoices normally detail and price tile sizes individually, therefore calculated square metre prices are intended as a guide only.

Full payment is required with an order placement unless a 30 day monthly account is in place with our company.

All stocked items are usually dispatched within 3-5 working days.

DELIVERIES & COLLECTIONS

We offer a fast, reliable nationwide delivery service and an export service on request.

All orders will be delivered on a large lorry so it is important that any restricted access details are advised prior to delivery. The

load will be placed, at the driver's discretion, to the nearest safest point to the property; this may be on the drive or pavement. The delivery driver cannot help handle the goods, so please arrange for somebody to help or oversee the offload.

Most nationwide deliveries are 'next-day' between the hours of 9.00 am and 5.00 pm. An additional charge will be made for a stipulated morning or afternoon delivery.

Care needs to be taken when unpacking all stone tiles as spacers may need to be removed from the packaging before the tiles are lifted out. Tiles should always be stacked and stored vertically (on edge) but not on a hard surface as this causes unnecessary edge chipping.

All orders must be examined on delivery and any shortages, damages or other discrepancies must be notified in writing within 48 hours.

Collections are by prior arrangement only and preferably by a suitable vehicle so where goods can be mechanically loaded. Goods collected are then transported at the individual's own risk.

Installation is viewed as acceptance of goods supplied, which means any claims after this stage cannot be accepted.

FULL TERMS AND CONDITIONS OF SALE ON REVERSE OF ALL QUOTATIONS & INVOICES



A SMOOTH SURFACE TO THE FACE OF THE STONE...

HONEDSTONE



SIZE MM & PRICE PER M ²		AZUL	AGINCOURT	BABYLON	CREMA MARFIL
LIMESTONE	305X305X10	£45.15	£40.42	£33.97	£44.29
	400X400X10	£51.50	£43.75	£37.75	-
	400X400X20	-	£41.00	-	£53.00
	600X300X10	£51.82	£44.48	£37.92	-
	610X305X10	-	-	-	£46.88
	600X400X20	-	£43.41	-	£53.00
	600X600X20	-	£45.37	-	£63.05
	F/LX400X20	-	£42.00	-	-
	F/LX600X20	-	£48.50	-	-

ALL PRICES EXCLUDE VAT & ALL SIZES ARE NOMINAL

AGINCOURT



CREMA MARFIL



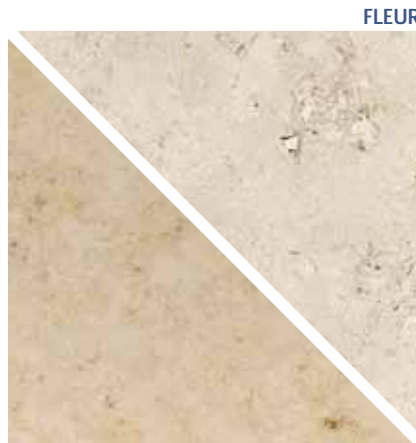
▲ A simple yet effective limestone; amongst the palest in our range. **Babylon** gives a clean and sleek look with minimal shell and vein content.



▲ Contrasting with our extensive range of pale limestones, **Azul's** striking blue-grey tones provide a dramatic and contemporary feel.

SIZE MM & PRICE PER M ²	FLEUR	GARDENIA	JURA BEIGE	JURA GREY	NEPTUNE	PAPYRUS	ST ETIENNE	ST LAUREN
305X305X10	£54.61	-	£47.30	£47.30	-	£44.50	£34.83	£55.47
400X400X10	£59.75	-	£47.75	£47.75	-	£45.50	£38.50	£57.50
400X400X20	-	£45.00	-	-	£42.75	-	£36.00	-
400X400X20 OCT*	-	-	-	-	-	-	£39.75	-
400X400X20 PENT*	-	-	-	-	-	-	£37.75	-
600X300X10	-	-	-	-	-	-	£38.81	-
610X305X10	£67.93	-	£49.62	£49.62	-	£49.19	-	£59.93
600X400X20	-	£45.12	-	-	£42.91	-	£36.28	-
600X600X20	-	£53.96	-	-	£50.79	£51.43	£39.31	£69.89
F/LX400X20	-	-	-	-	-	£48.00	£38.00	-
F/LX600X20	-	-	-	-	-	-	£44.00	-

ALL PRICES EXCLUDE VAT & ALL SIZES ARE NOMINAL. *OCTAGON & PENTAGON TILES INCLUDE SLATE INSET.



JURA BEIGE



PAPYRUS

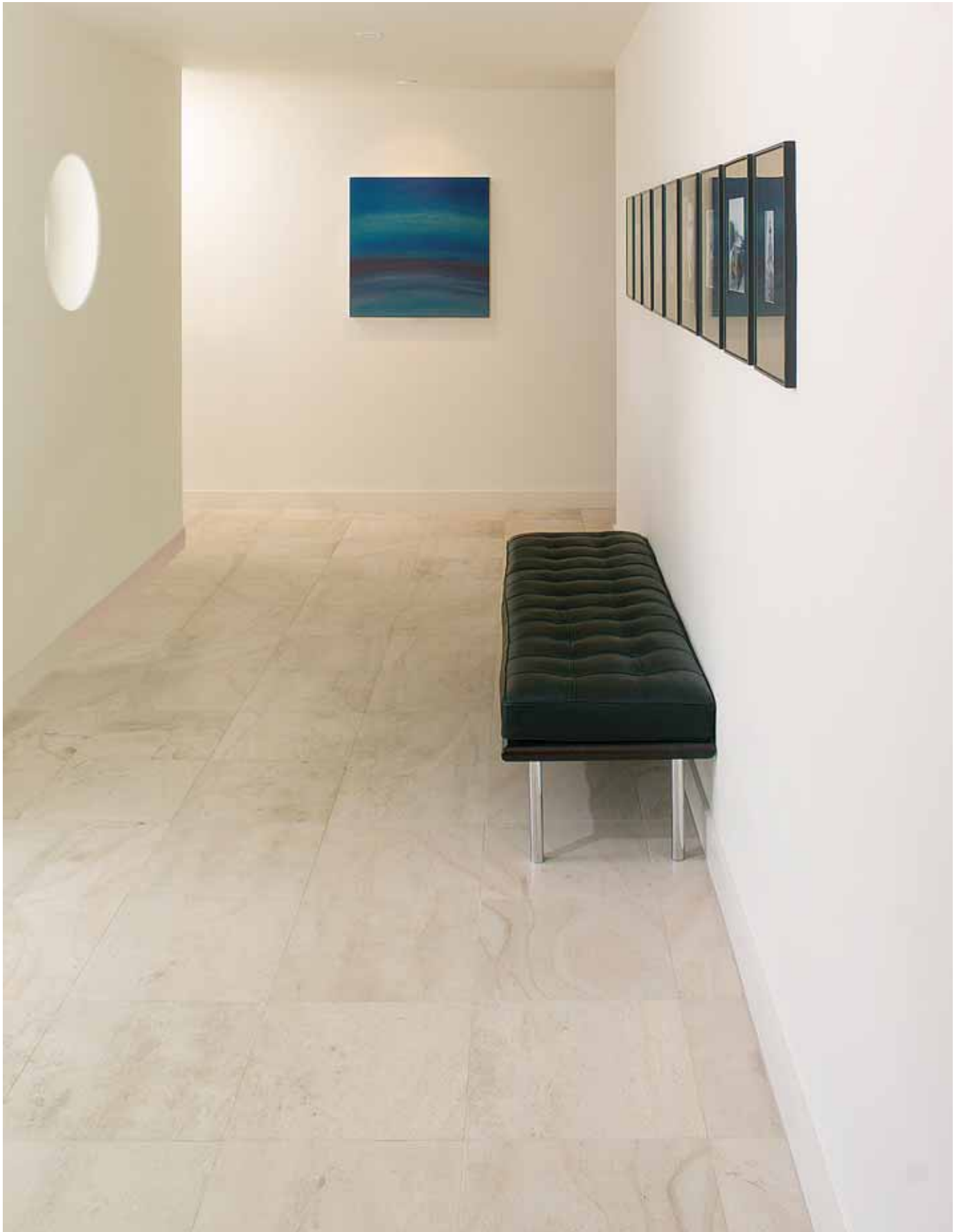


GARDENIA

◀ With soft blue-grey tones and dispersed fossil markings, this hardwearing limestone polishes beautifully. **Jura Grey** is an appealing alternative to its paler contemporaries.



▲ **St Etienne** is an elegant pale limestone with a subtle oatmeal fleck. The option of a slate inset adds interest and a sense of opulence; ideal for traditional hallways and living areas.



▲ Fusing oatmeal and caramel tones, **Beauvillon** is a sophisticated French limestone. Subtle waves of colour make for an unrivalled grace.

Monmouth Head Office

Unit 1, Wonastow Industrial Estate,
Monmouth, NP25 5JB
Tel: 01600 715444 Fax: 01600 715494

Bath

15-16 Broad Street,
Bath, BA1 5LJ
Tel: 01225 460033 Fax: 01225 460099

Cardiff

Unit 1, Dominion Way,
Newport Road, Cardiff CF24 1RF
Tel: 029 2049 0408 Fax: 029 2049 0409

Cheltenham

12 Montpellier Arcade,
Montpellier Street, Cheltenham, GL50 1SU
Tel: 01242 530500 Fax: 01242 530507

Exeter

3 The Newton Centre, off Silverton Road,
Thorverton Road, Matford Park, Exeter EX2 8GN

OPENING SOON

Bordeaux

Les 5 Chemins
Ave de Magudas, 33185 Le Haillan, Bordeaux, France

OPENING SOON

www.mandarinstone.com

email: info@mandarinstone.com

MANDARINSTONE